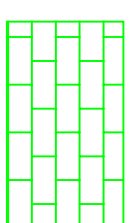
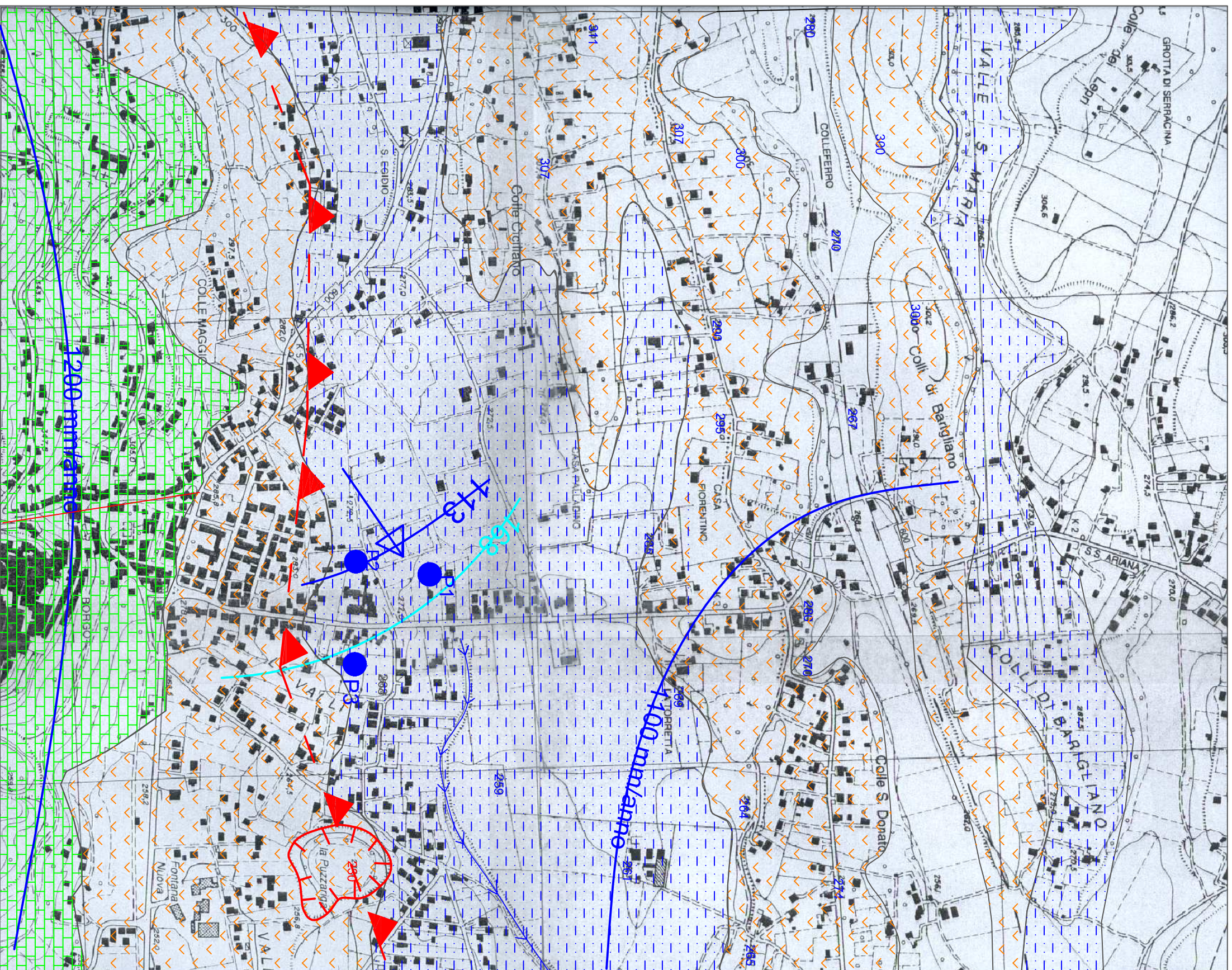


# CARTA IDROGEOLOGICA

(Scala 1 : 10.000)

(settoro campo sportivo di Artena)

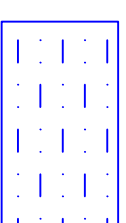
(Geologo Dott. Pio Sella)



Calcarei di piattaforma permeabili per fratturazione e dissoluzione.  
i.f. media = 700 - 900 mm/anno



Lapilli e tuffe (prodotti piroclastici permeabili per porosità)  
i.f. media = 100 - 300 mm/anno



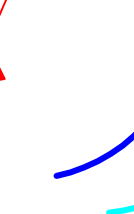
Terreno eluvio-colluviale permeabile per porosità.  
i.f. media = n. d.



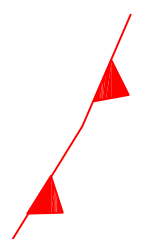
Ubicazione pozzi  
P1 - pozzo Bruni (17 l/sec)  
P2 - pozzo Marafini  
P3 - pozzo Fratelli Pompa (15 l/sec)



Falda medio profonda.  
(in m s.l.m.)



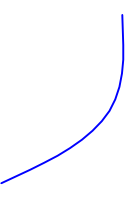
Falda profonda.  
(in m s.l.m.)



Sovrascorrimento presunto.



Faglia.



Isoiete.



Sink-hole di origine carsica.